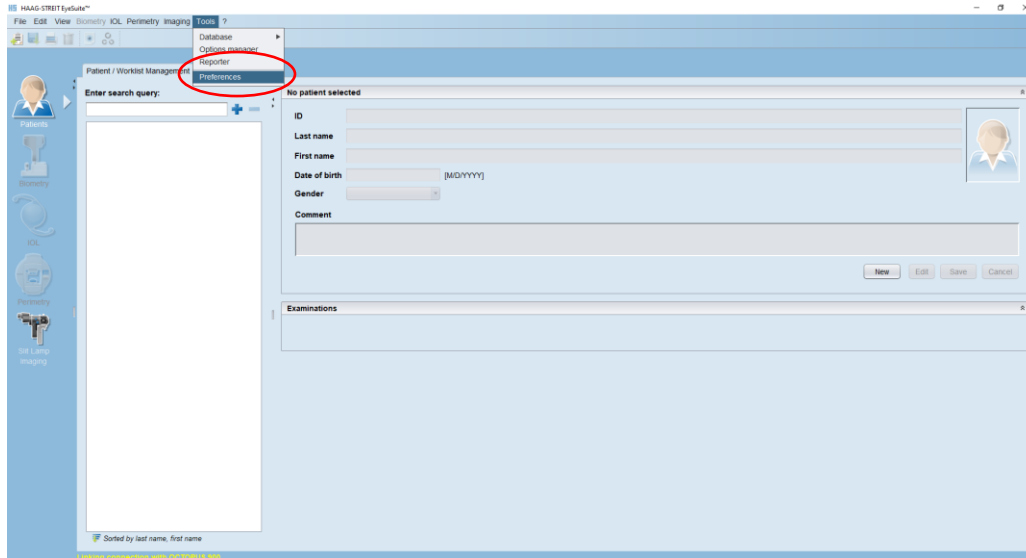
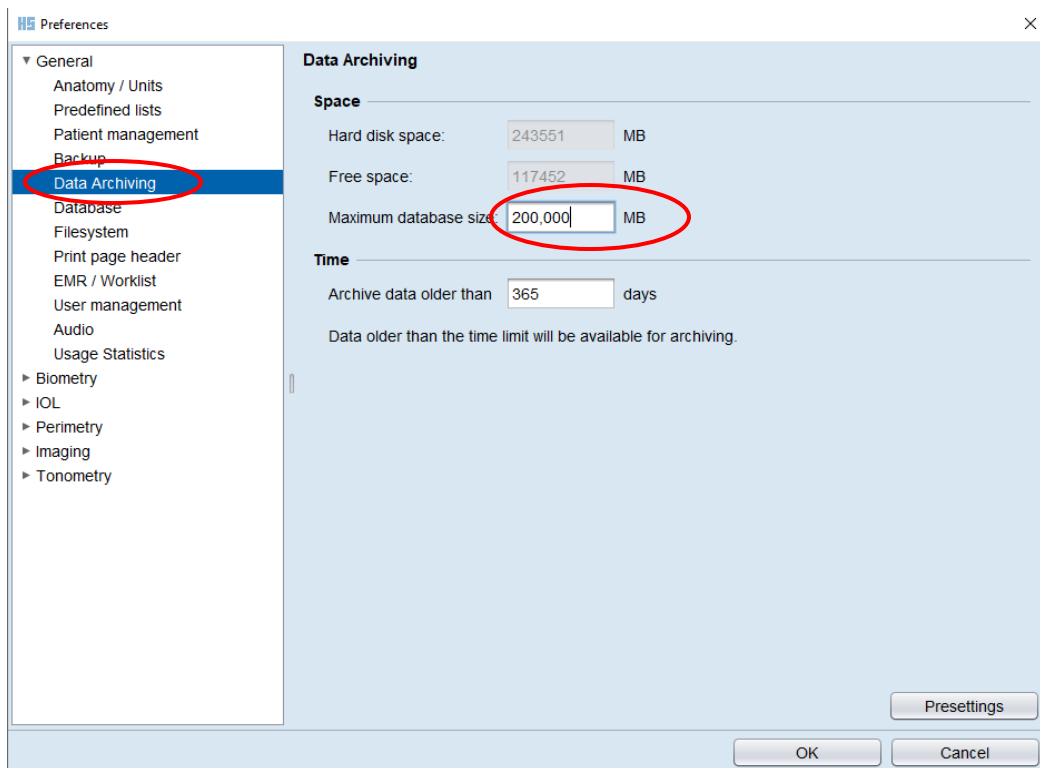


How to address Data Archiving message.

If Data Archiving (Data Archival) message appears GO to Tools>>> preferences

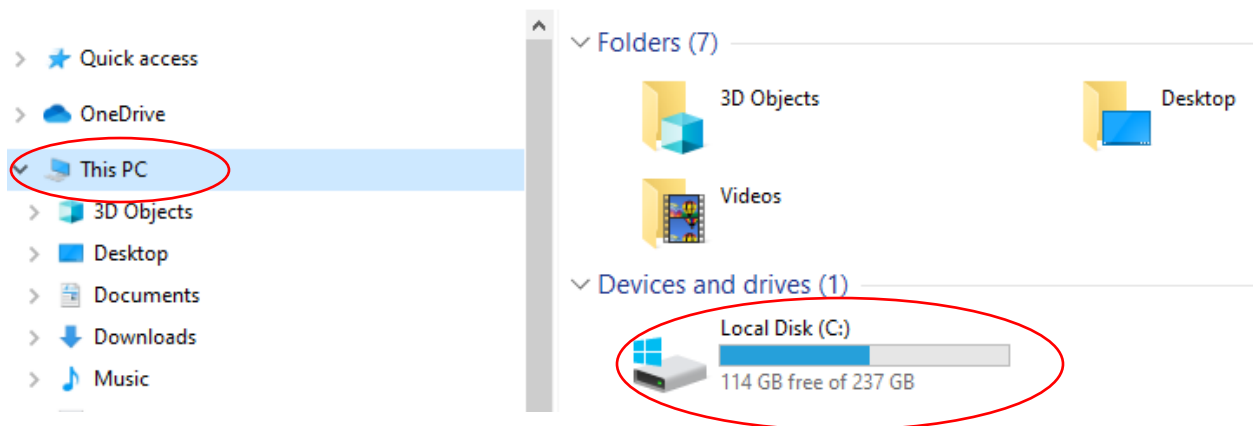


When the preferences menu opens expand general menu, click on data archiving, If the setting is below 200,000. Then change setting to 200000 Before clicking ok make sure you click in the time box otherwise the change will not be made.



Once you have made the change to 200,000 close EyeSuite and reopen. The archiving message should no longer appear. If the message appears and your database is over 200,000 you will need to Archive. If the database gets too large then the C: drive will fill and the Archiving process will take longer and could cause file corruption.

To check the space on the C: drive; Open File Explorer then click on This PC (windows 10) or My Computer (windows 7) to the right in the main pane the remaining space on the C: drive will be visible.



If the C drive is full and the archiving message is still appearing when EyeSuite is opened then the data will need to be archived.